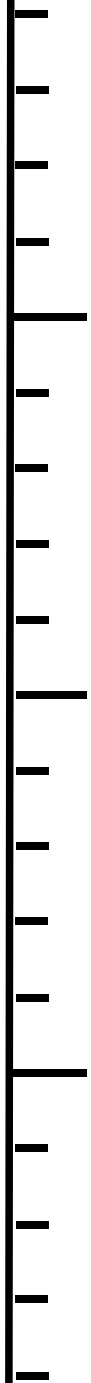
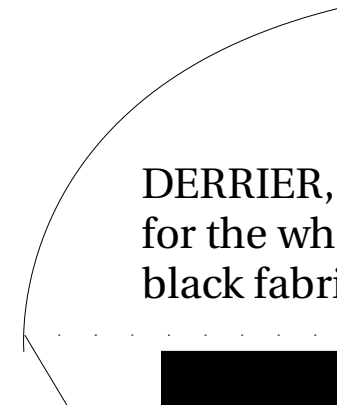
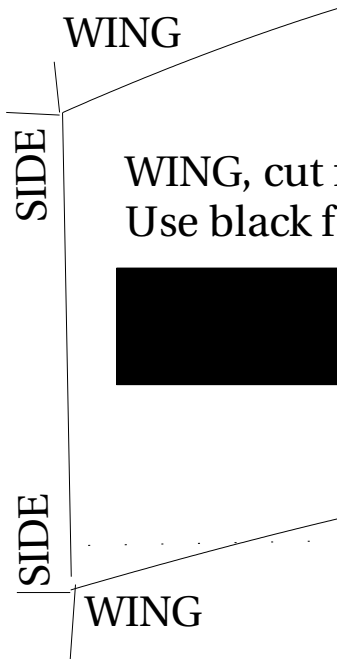
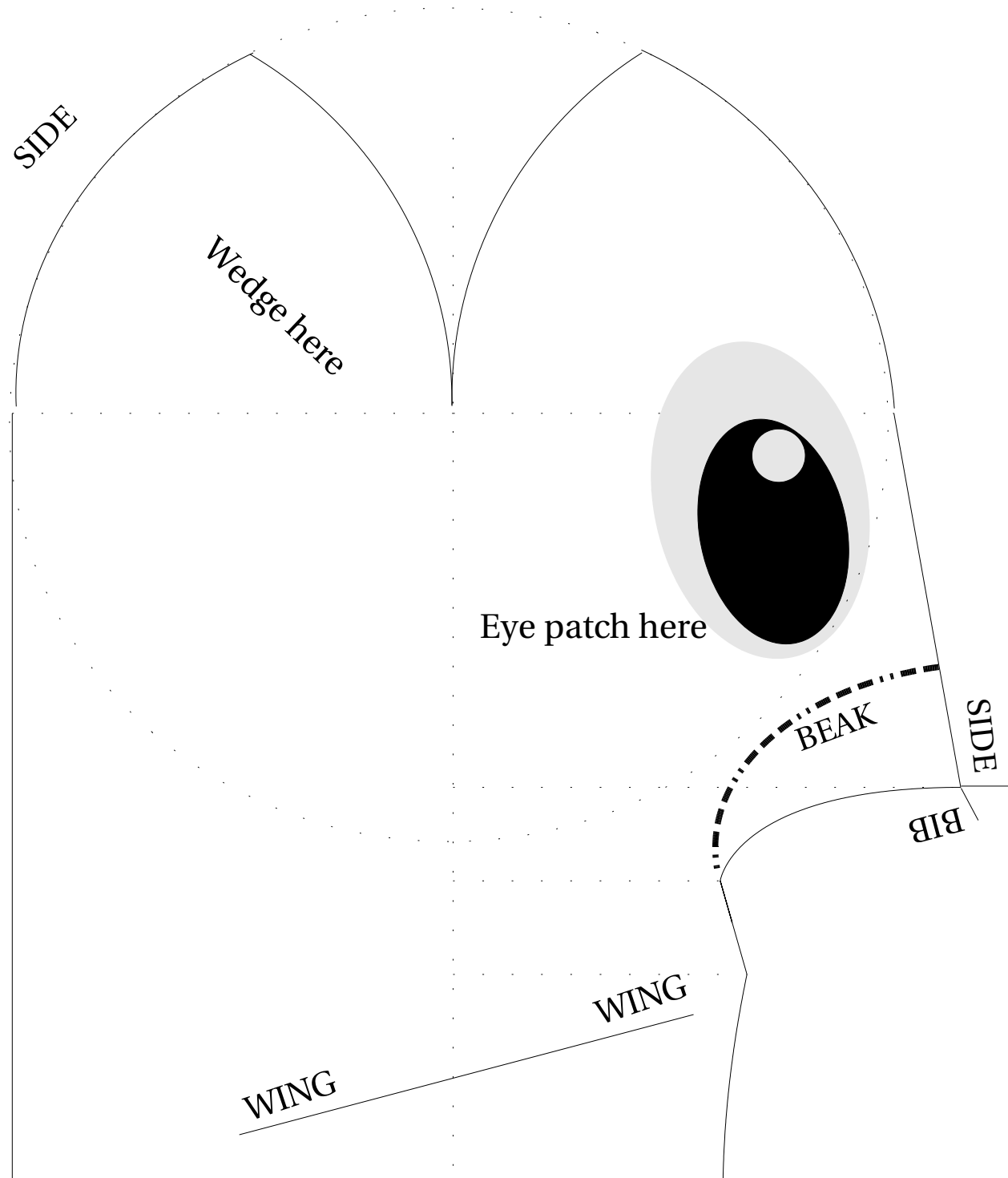


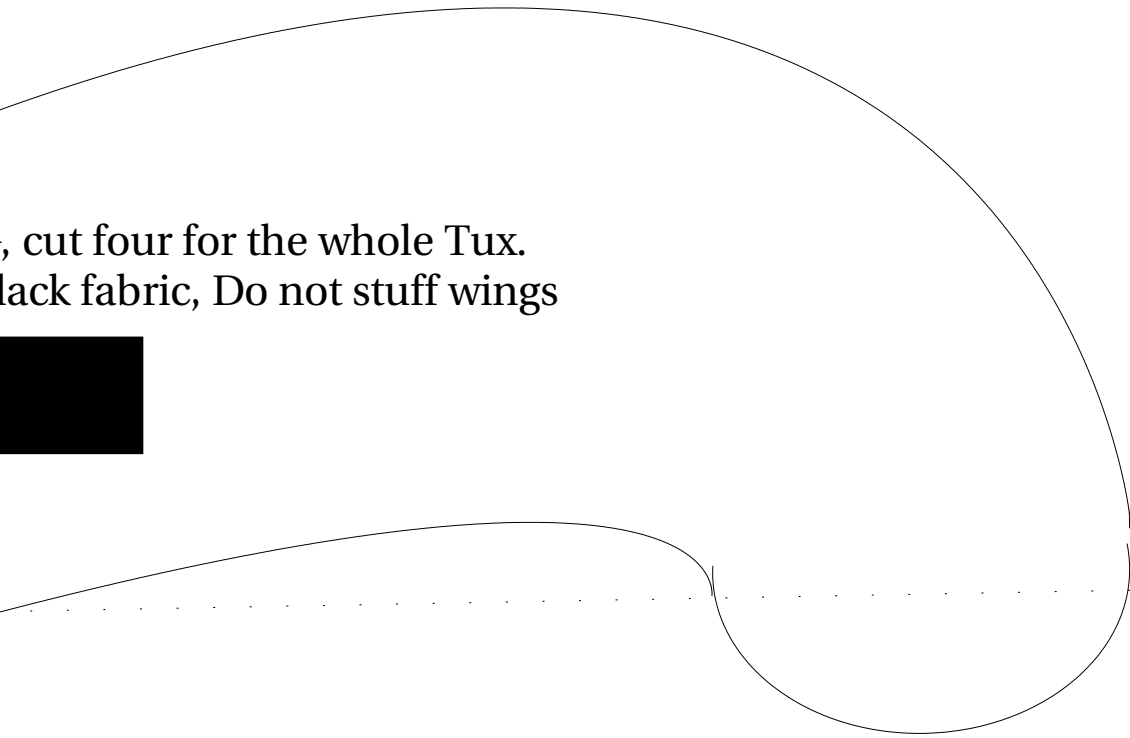
0 cm



10 cm



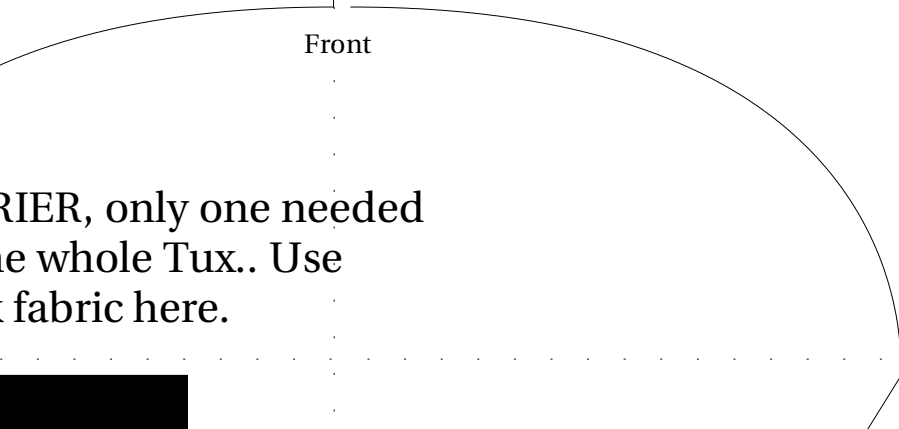
, cut four for the whole Tux.
black fabric, Do not stuff wings



SIDE | SIDE

Front

RIER, only one needed
e whole Tux.. Use
t fabric here.



Tux Pattern

<http://www>
<mailto:joe>

The whole Tux is vertically symetric. So here
You learn how to make one half. The other half
is just the mirror of this one here.
There are loads of tricks to sew this one properly th
why some pictures are attached here.

To implement the eyes it would be best to use pair
stiched patches and just attach them.

TODOS: Further development of the feet, they are
in development status, they have to be improved

ern Version 0.6, 04. May. 2005

www.free-penguin.org

berg.feuerhake@free-penguin.org

Changelog:

- enhancements in curvature of the head
- further enhancements of head and behinds
- put some cm- and inch-rulers to it, to give sewers an idea of the original size
- improved beak form
- color marks are put within the patches
- WhichPartGoesWithWhich Documentation

erly that

e painted or

y are now
ved



20 cm

30 cm

BIB

Foot goes here

Wedge here

SIDE

Backside/Tail

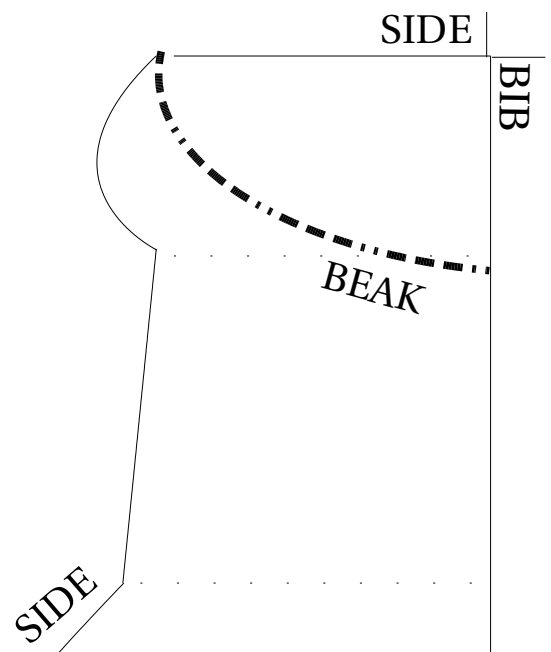
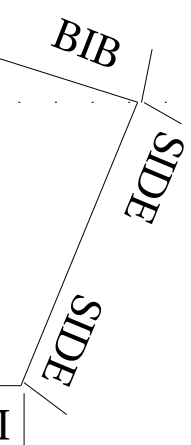
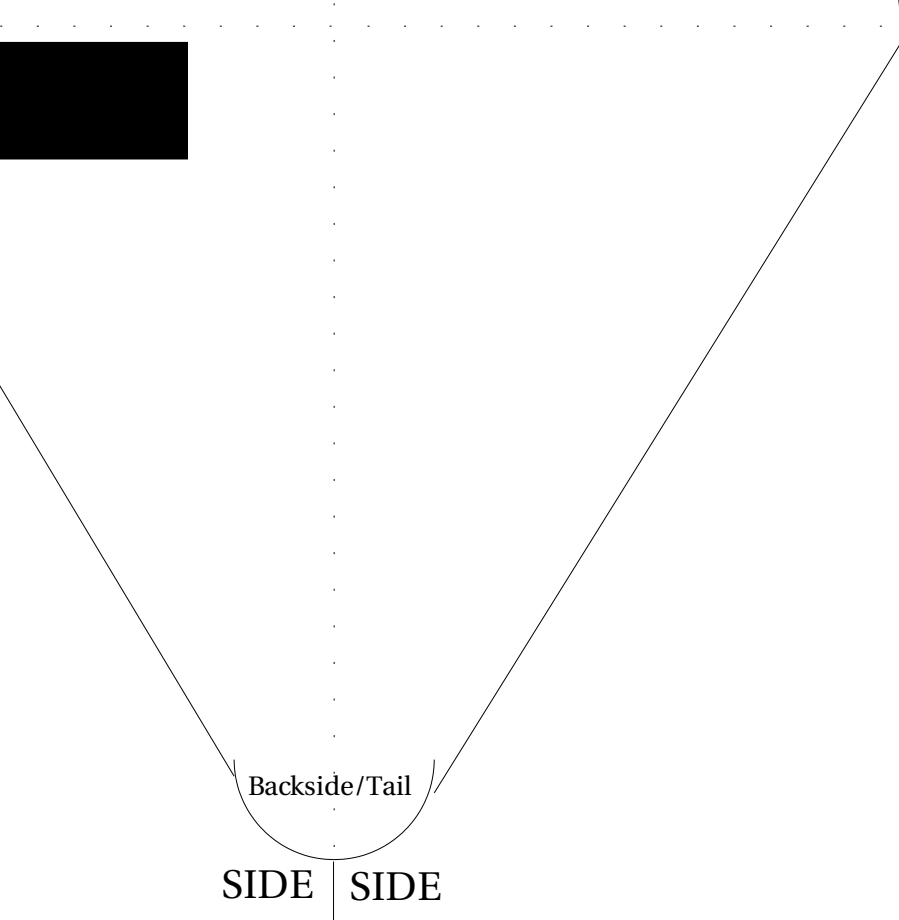
DERRIER

Front

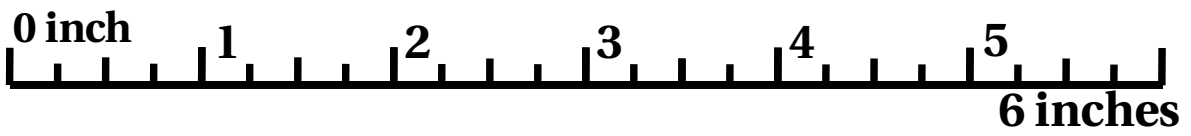
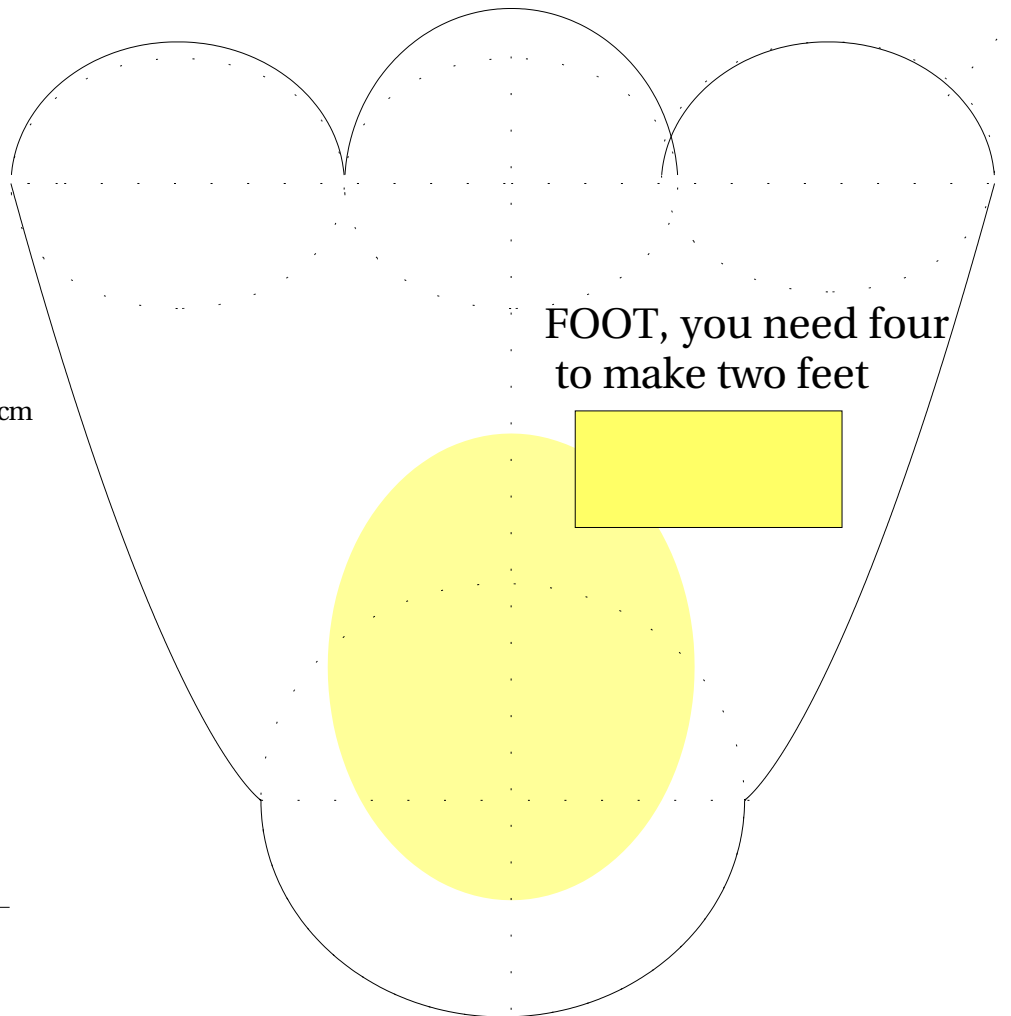
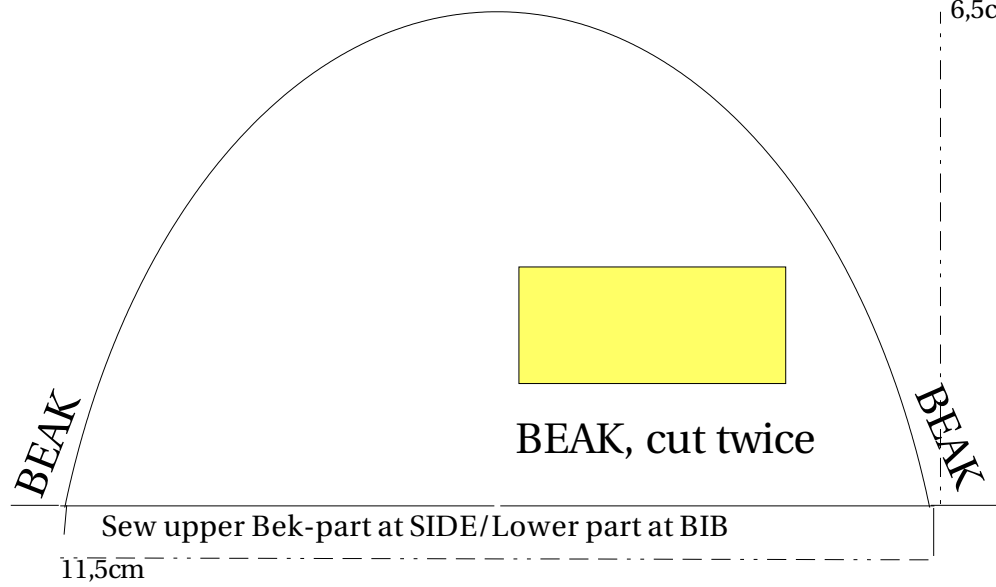
DERRIER

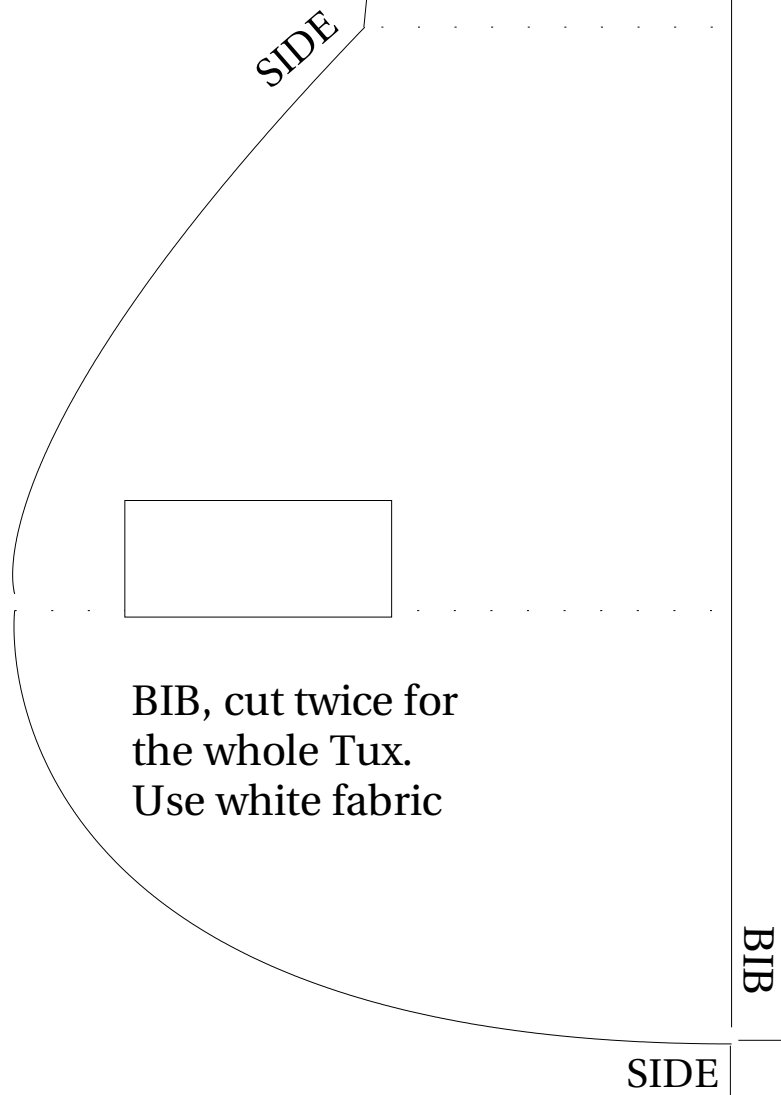
SIDE

The **SIDE** part, you need two of them for the whole tux Use black fabric









License: This patterns



ns are released under GPL